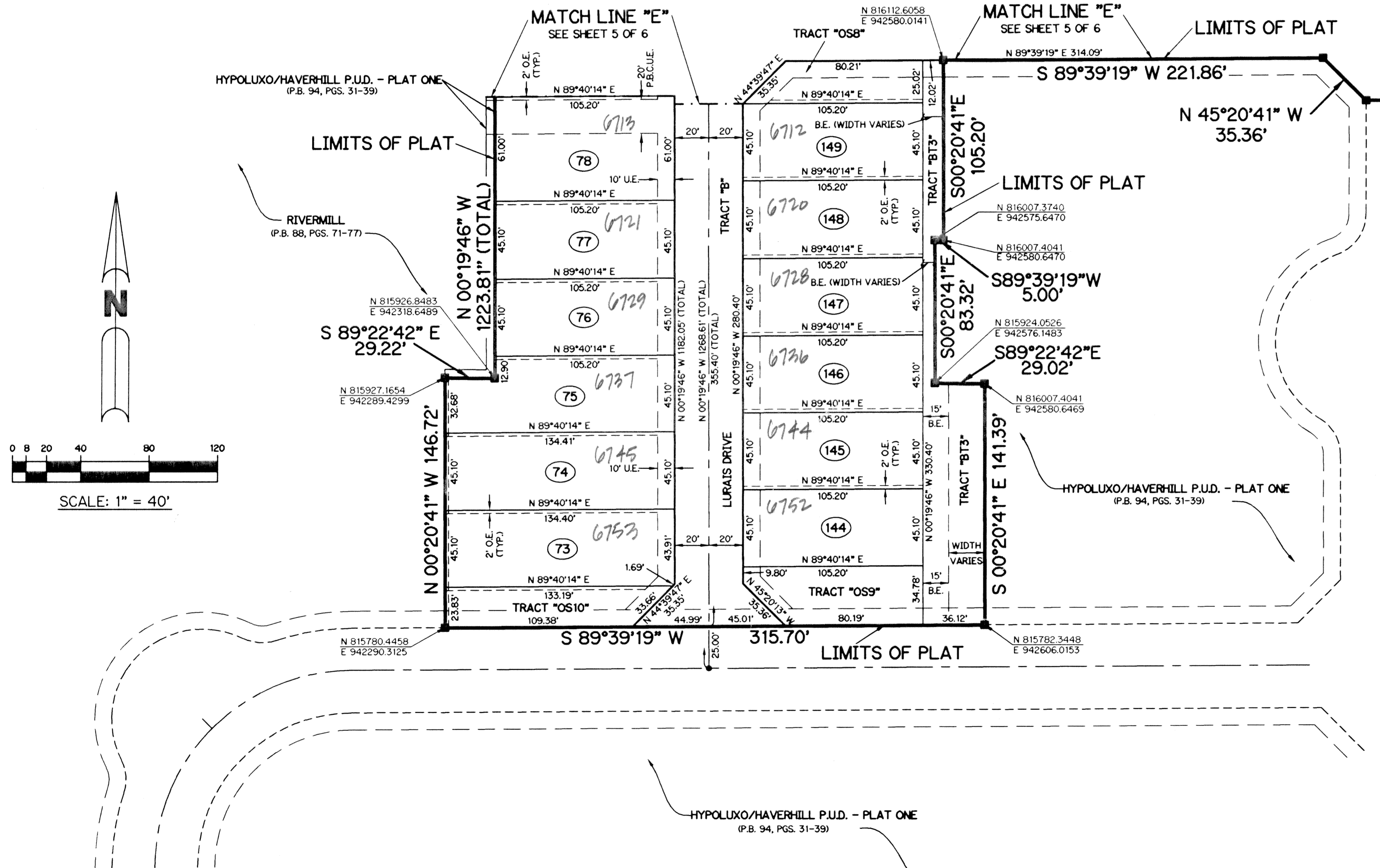


# PLANNED UNIT DEVELOPMENT HYPOLUXO/HAVERHILL P.U.D. - PLAT TWO

BEING A REPLAT OF TRACT "B", HYPOLUXO/HAVERHILL P.U.D. - PLAT ONE, AS RECORDED IN PLAT BOOK 94, PAGES 31 THROUGH 39, INCLUSIVE, ALL OF THE PUBLIC RECORDS OF PALM BEACH COUNTY, FLORIDA, LYING IN SECTION 2, TOWNSHIP 45 SOUTH, RANGE 42 EAST, PALM BEACH COUNTY, FLORIDA.

SHEET 6 OF 6 JANUARY, 2002

THIS INSTRUMENT PREPARED BY  
WILBUR F. DIVINE, P.S.M. 4190, STATE OF FLORIDA  
LAWSON, NOBLE AND WEBB, INC., LB-6674  
ENGINEERS PLANNERS SURVEYORS  
420 COLUMBIA DRIVE, SUITE 110  
WEST PALM BEACH, FLORIDA

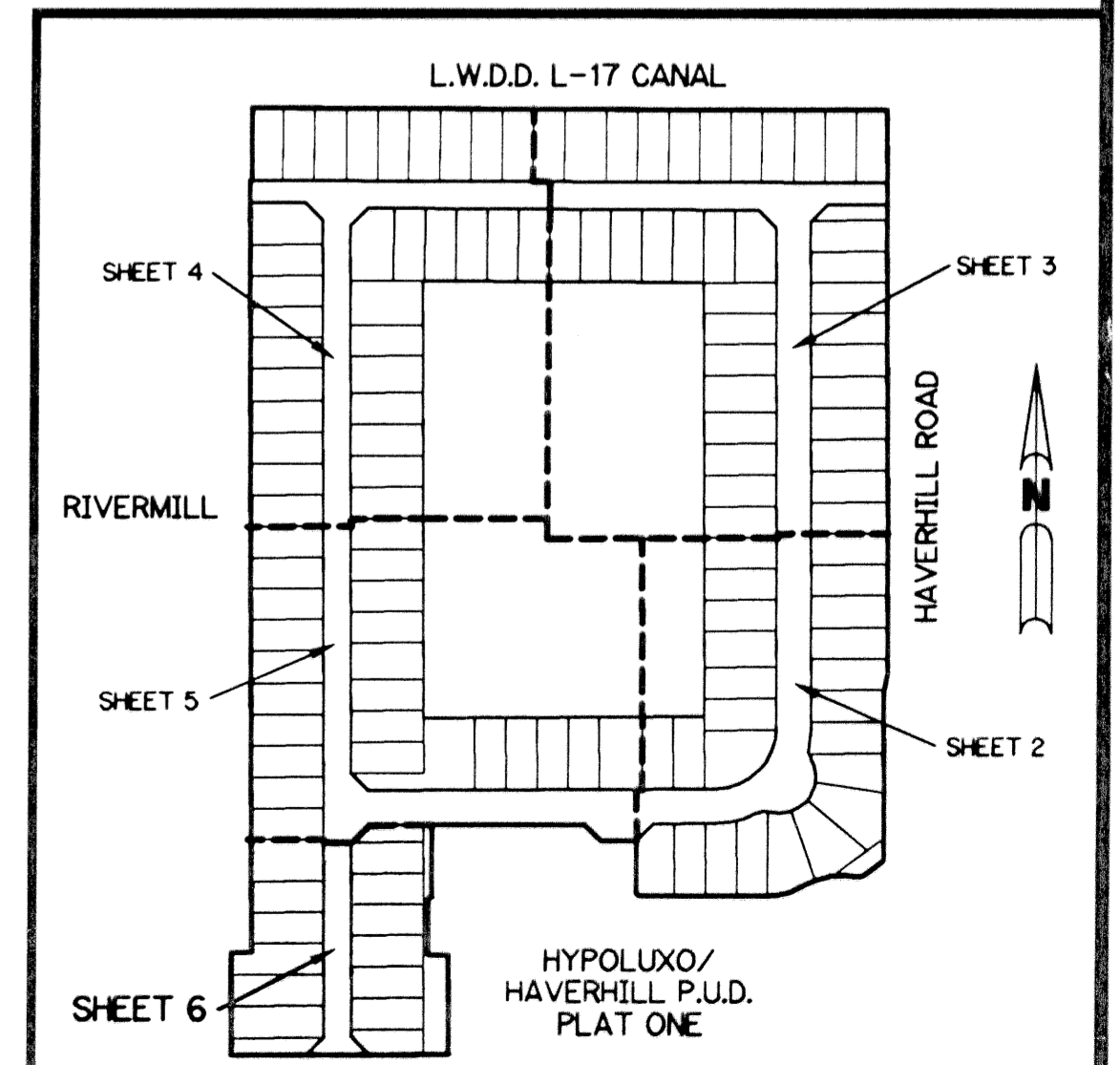
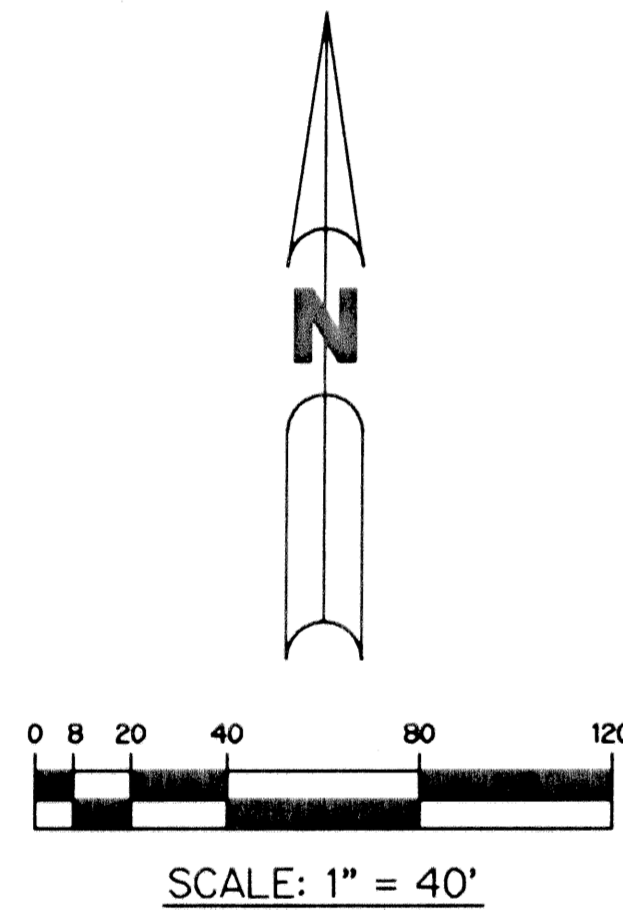


### LEGEND:

- - SET PERMANENT REFERENCE MONUMENT, L.B. #6674
- - FOUND PERMANENT REFERENCE MONUMENT, L.B. #6674
- - SET PERMANENT CONTROL POINT, L.B. #6674
- - FOUND PERMANENT CONTROL POINT, L.B. #6674
- Δ - DELTA ANGLE
- B.E. - BUFFER EASEMENT
- CB - CHORD BEARING
- CH - CHORD DISTANCE
- C - CENTERLINE
- D.B. - DEED BOOK
- D.E. - DRAINAGE EASEMENT
- L - ARC LENGTH
- L.A.E. - LIMITED ACCESS EASEMENT
- L.M.A.E. - LAKE MAINTENANCE ACCESS EASEMENT
- L.M.E. - LAKE MAINTENANCE EASEMENT
- L.W.D.D. - LAKE WORTH DRAINAGE DISTRICT
- N.R. - NOT RADIAL
- N.T.S. - NOT TO SCALE
- O.R.B. - OFFICIAL RECORD BOOK
- P.B. - PLAT BOOK
- PGS. - PAGES
- P.S.M. - PROFESSIONAL SURVEYOR AND MAPPER
- P.B.C.U.E. - PALM BEACH COUNTY UTILITY EASEMENT
- R - RADIUS
- RAD. - RADIAL
- R/W - RIGHT-OF-WAY
- S.T. - SURVEY TIE
- U.E. - UTILITY EASEMENT
- O.E. - OVERHANG EASEMENT
- N 737648.0171 - DENOTES STATE PLANE COORDINATES
- E 905258.2326

### NOTE:

COORDINATES SHOWN ARE GRID COORDINATES  
DATUM = NAD 83 (1990 ADJUSTMENT)  
ZONE = FLORIDA EAST ZONE  
LINEAR UNIT = U.S. SURVEY FEET  
COORDINATE SYSTEM = 1983 STATE PLANE TRANSVERSE MERCATOR PROJECTION  
ALL DISTANCES ARE GROUND  
SCALE FACTOR = 1.000034481  
PLAT BEARING = GRID BEARING  
NO ROTATION



KEY MAP  
N.T.S.

SUBDIVISION HYPOLUXO/HAVERHILL PUD  
 BOOK 94 PAGE 39  
 FLOOD MAP # 175B  
 ZONING PUD  
 QUAD # 3A  
 SE  
 TAZ 424  
 PUD NAME HYPOLUXO/HAVERHILL PUD